

OLU SERIES SOLAR ENERGY STORAGE SYSTEM



Scan QR to learn more

Nanjing Oulu Electric Co.,Ltd



Company Introduction

Nanjing Oulu Electric Corp., Ltd. was established in September 2007, and has been located in stock market since 19th May, 2017. It is referred to as "OULU Electric", stock code 871415, located in Nanjing, China. OULU Electric provides customers with personalized solutions to achieve the business value and customer value and grow together.

OULU Electric is committed to the R&D, production, sales and services of products related to industrial automation and new energy power generation. Our main products include frequency converters, servo drives, small and medium-sized wind turbines, wind turbine controllers, inverters, etc. OULU also provides distributed grid-connected wind power generation systems, off grid wind power generation systems, wind solar complementary power supply systems, photovoltaic water lifting systems and solutions for the State Grid, Inner Mongolia power grid and communication base stations. It is a high-tech enterprise integrating R&D, production, sales and service. At the same time, the company has independent import and export rights and self-declaration qualification.

OULU Electric has strong scientific R&D team. Based on the industrial automation control technology with independent intellectual property rights for many years, the company provides customers with high-quality products and solutions, and forms a series of supporting services such as installation, commissioning, operation and maintenance, technology upgrading and remote data analysis.



Stock code:871415

 中国检验认证集团 CHINA INSPECTION & INSPECTION GROUP	编号: 23010301010101010101 日期: 2023年12月15日	
	<h2 style="text-align: center;">危险特性分类鉴别报告</h2> <p style="text-align: center;">(危险货物)</p>	
<p>样品名称: 醇醚能源电机用 51.2V 100Ah</p> <p>委托单位: 南京燃基电气股份有限公司</p> <p>供应商: 南京燃基电气股份有限公司</p>		



CNC TESTERS
众测检测

Report No: CNC302000200001

Material Safety Data Sheet

化学品安全技术说明书

Report No.:	CNC302000200001	
报告编号:		
Name of sample:	Energy Storage Lithium battery module 储能电池模组	
样品名称:		
Model:	\$1.2V 150Ah	
型号:		
Type:	\$1.2V 150Ah \$520Ah	
规格:		
Client:	Nanjing Chu Electric Corp., Ltd	
委托单位:	江苏中电电气有限公司	
Address:	Shan Xingyuan Road, Economic Development Zone, Luhu District, Nanjing, China 中国南京市六合区山杏园路	
地址:		
Written:	<i>Liou Kai Feng</i>	Approved:
编写:		批准:
Reviewed:	<i>Liou Kai Feng</i>	
审核:		
Date of issue:	2023.09.26	Seal of CNC:
发布日期:		众测 中电



CNC TESTERS
众测检测



CNC TESTING (Shenzhen) Co., Ltd.
众测检测(深圳)有限公司

1305-004, 1305-005, 1305-006, 1305-007, 1305-008, 1305-009, 1305-010, 1305-011, 1305-012, 1305-013, 1305-014, 1305-015, 1305-016, 1305-017, 1305-018, 1305-019, 1305-020, 1305-021, 1305-022, 1305-023, 1305-024, 1305-025, 1305-026, 1305-027, 1305-028, 1305-029, 1305-030, 1305-031, 1305-032, 1305-033, 1305-034, 1305-035, 1305-036, 1305-037, 1305-038, 1305-039, 1305-040, 1305-041, 1305-042, 1305-043, 1305-044, 1305-045, 1305-046, 1305-047, 1305-048, 1305-049, 1305-050, 1305-051, 1305-052, 1305-053, 1305-054, 1305-055, 1305-056, 1305-057, 1305-058, 1305-059, 1305-060, 1305-061, 1305-062, 1305-063, 1305-064, 1305-065, 1305-066, 1305-067, 1305-068, 1305-069, 1305-070, 1305-071, 1305-072, 1305-073, 1305-074, 1305-075, 1305-076, 1305-077, 1305-078, 1305-079, 1305-080, 1305-081, 1305-082, 1305-083, 1305-084, 1305-085, 1305-086, 1305-087, 1305-088, 1305-089, 1305-090, 1305-091, 1305-092, 1305-093, 1305-094, 1305-095, 1305-096, 1305-097, 1305-098, 1305-099, 1305-100, 1305-101, 1305-102, 1305-103, 1305-104, 1305-105, 1305-106, 1305-107, 1305-108, 1305-109, 1305-110, 1305-111, 1305-112, 1305-113, 1305-114, 1305-115, 1305-116, 1305-117, 1305-118, 1305-119, 1305-120, 1305-121, 1305-122, 1305-123, 1305-124, 1305-125, 1305-126, 1305-127, 1305-128, 1305-129, 1305-130, 1305-131, 1305-132, 1305-133, 1305-134, 1305-135, 1305-136, 1305-137, 1305-138, 1305-139, 1305-140, 1305-141, 1305-142, 1305-143, 1305-144, 1305-145, 1305-146, 1305-147, 1305-148, 1305-149, 1305-150, 1305-151, 1305-152, 1305-153, 1305-154, 1305-155, 1305-156, 1305-157, 1305-158, 1305-159, 1305-160, 1305-161, 1305-162, 1305-163, 1305-164, 1305-165, 1305-166, 1305-167, 1305-168, 1305-169, 1305-170, 1305-171, 1305-172, 1305-173, 1305-174, 1305-175, 1305-176, 1305-177, 1305-178, 1305-179, 1305-180, 1305-181, 1305-182, 1305-183, 1305-184, 1305-185, 1305-186, 1305-187, 1305-188, 1305-189, 1305-190, 1305-191, 1305-192, 1305-193, 1305-194, 1305-195, 1305-196, 1305-197, 1305-198, 1305-199, 1305-200, 1305-201, 1305-202, 1305-203, 1305-204, 1305-205, 1305-206, 1305-207, 1305-208, 1305-209, 1305-210, 1305-211, 1305-212, 1305-213, 1305-214, 1305-215, 1305-216, 1305-217, 1305-218, 1305-219, 1305-220, 1305-221, 1305-222, 1305-223, 1305-224, 1305-225, 1305-226, 1305-227, 1305-228, 1305-229, 1305-230, 1305-231, 1305-232, 1305-233, 1305-234, 1305-235, 1305-236, 1305-237, 1305-238, 1305-239, 1305-240, 1305-241, 1305-242, 1305-243, 1305-244, 1305-245, 1305-246, 1305-247, 1305-248, 1305-249, 1305-250, 1305-251, 1305-252, 1305-253, 1305-254, 1305-255, 1305-256, 1305-257, 1305-258, 1305-259, 1305-260, 1305-261, 1305-262, 1305-263, 1305-264, 1305-265, 1305-266, 1305-267, 1305-268, 1305-269, 1305-270, 1305-271, 1305-272, 1305-273, 1305-274, 1305-275, 1305-276, 1305-277, 1305-278, 1305-279, 1305-280, 1305-281, 1305-282, 1305-283, 1305-284, 1305-285, 1305-286, 1305-287, 1305-288, 1305-289, 1305-290, 1305-291, 1305-292, 1305-293, 1305-294, 1305-295, 1305-296, 1305-297,

Hybrid Inverter (Off Grid)

Product Description

The OLU series off-grid hybrid inverters combine multiple functions such as inverter, MPPT solar controller, and mains charging, which are committed to providing stable power for electrical equipment in areas experiencing power outages and shortages and unstable power supply.

The OLU series inverters are designed to output pure sine wave and convert DC power into AC power based on a fully digital intelligent solution with advanced SPWM technology. The OLU series inverters are suitable for AC loads such as household appliances, power tools, industrial equipment, and audio & visual equipment.

The LCD screen can display real-time machine status to ensure the safe and stable operation of the system.

Product Features



Pure sine wave



Wide PV input voltage



Independent operation without battery



Integrated MPPT controller

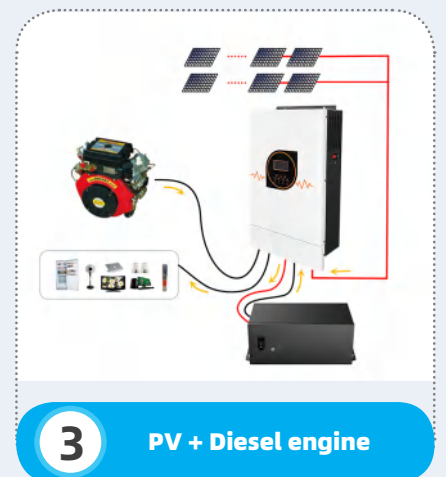
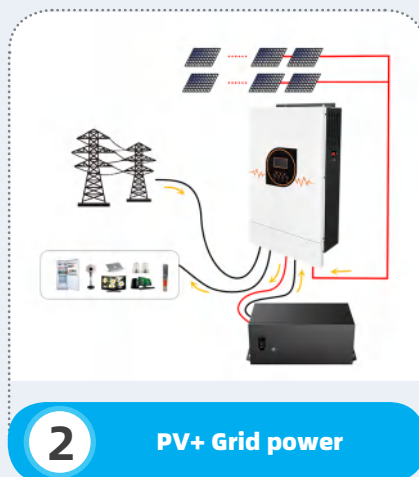


LCD display



Electronic protection function

System Schematic





Technical Specifications

Model		OLU3024VMII	OLU3524VMII
Rated power		3kW	3.5kW
System voltage		24VDC	
AC Output	Voltage (Battery mode)	Single phase 220VAC/230VAC/240VAC can be set, $\pm 5\%$	
	Conversion efficiency (Peak)	93%	
	Switchover time	10ms (PC); 20ms (Home appliance)	
	Wave	Pure sine wave	
Battery Input	Battery voltage	24VDC	
	Float voltage	27VDC	
	Overvoltage protection	33VDC	
Solar Charger	Max. input power	3.5kW	4kW
	MPPT voltage range	120~450VDC	
	Rated voltage/Max. input voltage	320VDC/500VDC	
	Max. input/charge current	18A/80A	
AC Charger	AC input voltage	230VAC	
	Voltage range	90~280VAC (Home appliance)/170~280VAC (PC)	
	Frequency range	50 Hz/60 Hz (Adaptive)	
	Max. input/charge current	40A/60A	
	Weight	9kg	
	Communication interface	RS485	
	Appearance	With LCD screen	
Operating Environment	Operating temperature	-25°C ~+55°C	
	Storage temperature	-25°C ~+60°C	
	Humidity	5%~95% Relative humidity (Non-condensing)	
Protection level		IP20	



Technical Specifications

Model		OLU3048VMII	OLU3548VMII	OLU5048VMII	OLU5548VMII
Rated power		3kW	3.5kW	5kW	5.5kW
System voltage		48VDC			
AC Output	Voltage (Battery mode)	Single phase 220VAC/230VAC/240VAC can be set, ±5%			
	Conversion efficiency (Peak)	93%			
	Switchover time	10ms (PC); 20ms (Home appliance)			
	Wave	Pure sine wave			
Battery Input	Battery voltage	48VDC			
	Float voltage	54VDC			
	Overvoltage protection	63VDC			
Solar Charger	Max. input power	3.5kW	4kW	5kW	5.5kW
	MPPT voltage range	120~450VDC			
	Rated voltage/Max. input voltage	320VDC/500VDC			
	Max. input/charge current	18A/80A		18A/100A	
AC Charger	AC input voltage	230VAC			
	Voltage range	90~280VAC (Home appliance)/170~280VAC (PC)			
	Frequency range	50 Hz/60 Hz (Adaptive)			
	Max. input/charge current	40A/80A			
	Weight	9.5kg			
	Communication interface	RS485			
	Appearance	With LCD screen			
Operating Environment	Operating temperature	-25℃ ~+55℃			
	Storage temperature	-25℃ ~+60℃			
	Humidity	5%~95% Relative humidity (Non-condensing)			
	Protection level	IP20			



Technical Specifications

Model		OLU5048MAXII	OLU5648MAXII
Rated power		5kW	5.6kW
Parallel capability		NO	
AC Output	Voltage (Battery mode)	Single phase 220VAC/230VAC/240VAC can be set, $\pm 5\%$	
	Conversion efficiency (Peak)	93%	
	Switchover time	10ms (PC); 20ms (Home appliance)	
	Wave	Pure sine wave	
Battery Input	Battery voltage	48VDC	
	Float voltage	54VDC	
	Overvoltage protection	63VDC	
Solar Charger	Max. input power	5kW	5.6kW
	MPPT voltage range	120~450VDC	
	Max. input voltage	500VDC	
	Max. input/charge current	18A/80A	18A/100A
AC Charger	AC input voltage	230VAC	
	Voltage range	90~280VAC (Home appliance)/170~280VAC (PC)	
	Frequency range	50 Hz/60 Hz (Adaptive)	
	Max. charge current	80A	
Operating Environment	Weight	9.5kg	
	Communication interface	RS485/CAN/Dry contact	
	Appearance	With LCD screen	
	Operating temperature	$-20^{\circ}\text{C} \sim +50^{\circ}\text{C}$	
	Storage temperature	$-30^{\circ}\text{C} \sim +70^{\circ}\text{C}$	
	Humidity	5%~95% Relative humidity (Non-condensing)	
	Protection level	IP20	



Technical Specifications

Model		OLU8048MAXII	OLU10048MAXII	OLU11048MAXII
Rated power		8kVA/8kW	10kVA/10kW	11kVA/11kW
Parallel capability		Max. 6 units		
AC Output	Voltage (Battery mode)	Single phase 230VAC, ±5%		
	Conversion efficiency (Peak)	93%		
	Switchover time	10ms (PC); 20ms (Home appliance)		
	Wave	Pure sine wave		
Battery Input	Battery voltage	48VDC		
	Float voltage	54VDC		
	Overvoltage protection	66VDC		
Solar charger	Max. input power	8kW (4kW*2)	10kW (5kW*2)	11kW (5.5kW*2)
	MPPT voltage range	90~450VDC		
	Max. input voltage	500VDC		
	Max. input/charge current	18A*2/150A		
AC charger	AC input voltage	230VAC		
	Voltage range	90~280VAC (Home appliance)/170~280VAC (PC)		
	Frequency range	50 Hz/60 Hz (Adaptive)		
	Max. charge current	120A	150A	
	Weight	19kg	21kg	
	Communication interface	RS485/CAN/Dry contact		
	Appearance	With LCD screen		
	Operating Environment	Operating temperature	-20℃ ~+50℃	
Storage temperature		-30℃ ~+70℃		
Humidity		5%~95% Relative humidity (Non-condensing)		
Protection level		IP20		

Hybrid Inverter (ON/Off Grid)



Product Description

The OLU series off-grid hybrid inverters combine multiple functions such as inverter, MPPT solar controller, and mains charging, which are committed to providing stable power for electrical equipment in areas experiencing power outages and shortages and unstable power supply. The OLU series inverters are designed to output pure sine wave and convert DC power into AC power based on a fully digital intelligent solution with advanced SPWM technology. The OLU series inverters are suitable for AC loads such as household appliances, power tools, industrial equipment, and audio & visual equipment. The LCD screen can display real-time machine status to ensure the safe and stable operation of the system.

Product Features



Pure sine wave



Wide PV input voltage



Independent operation without battery



Integrated MPPT controller

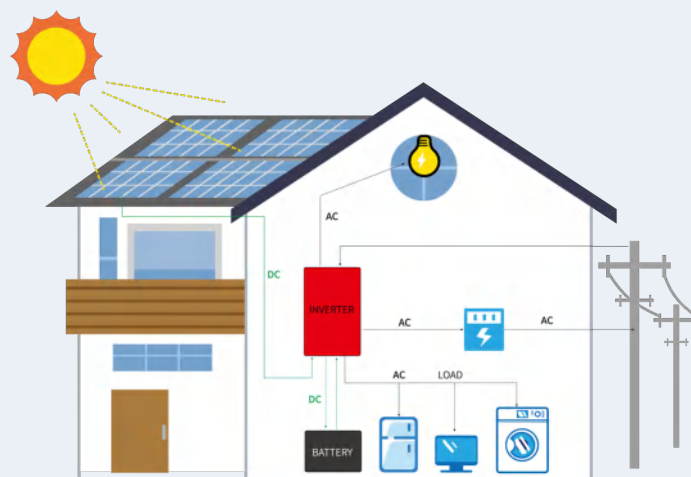


LCD display

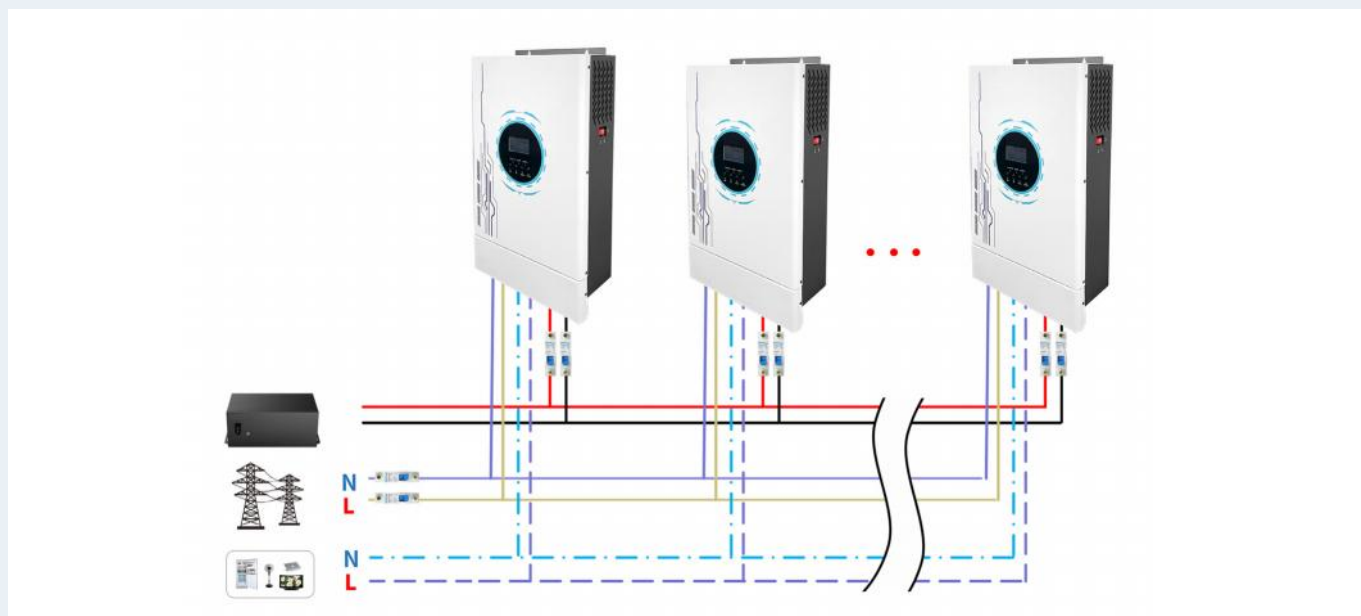


Electronic protection function

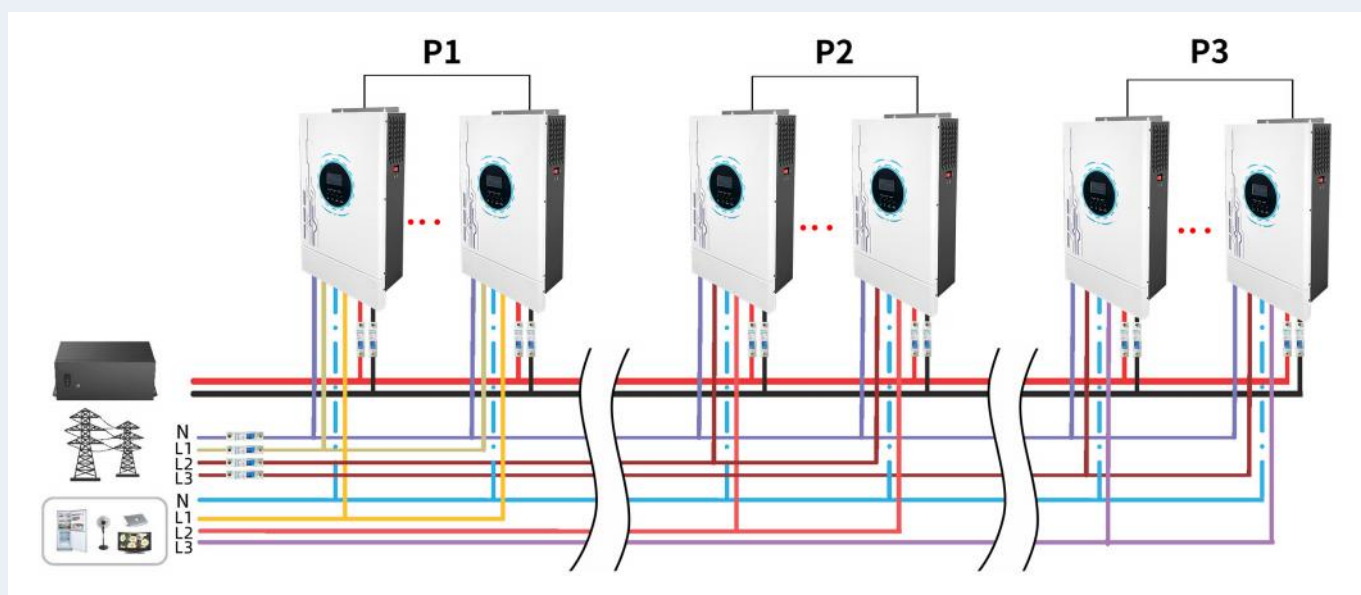
System Schematic



Single Phase Parallel Connection



Three-Phase Parallel Connection



Technical Specifications

Model		OLU3048GII	OLU3548GII	OLU5048GII	OLU5548GII
Rated power		3kW	3.5kW	5kW	5.5kW
Battery voltage		48VDC			
Parallel capability		Max. 9 units			
PV Input	Max. input power	3.5kW	4kW	5kW	5.5kW
	Rated voltage/Max. input voltage	360VDC/450VDC			
	MPPT voltage range	120~430VDC			
	Max. input/charge current	18A/80A			
On Grid					
AC Output	Rated output voltage	Single phase 220VAC/230VAC/240VAC can be set			
	Output voltage range	184~264.5VAC/195.5~253VAC (Optional)			
	Rated output current	13.1A	15.2A	21.7A	23.9A
	Power factor	>0.99			
	Max. conversion efficiency (DC/AC)	95%			
Off Grid					
AC Input	AC input voltage	230VAC			
	Input voltage range	90~280VAC (Home appliance)/170~280VAC (PC)			
	Frequency range	50 Hz/60 Hz (Adaptive)			
	Max. input/charge current	40A/80A			
Battery Mode Output	Rated output voltage	Single phase 220VAC/230VAC/240VAC can be set			
	Conversion efficiency (DC/AC)	93%			
	Wave	Pure sine wave			
On/Off Grid					
AC Output	Rated output voltage	Single phase 220VAC/230VAC/240VAC can be set			
	Output voltage range	184~264.5VAC/195.5~253VAC (Optional)			
	Rated output current	13.1A	15.2A	21.7A	23.9A
AC Input	AC input voltage	230VAC			
	Input voltage range	90~280VAC (Home appliance)/170~280VAC (PC)			
	Frequency range	50 Hz/60 Hz (Adaptive)			
	Max. input/charge current	40A/80A			
Battery Mode Output	Rated output voltage	Single phase 220VAC/230VAC/240VAC can be set			
	Conversion efficiency (DC/AC)	93%			
	Wave	Pure sine wave			
General Data	Dimension(W/H/D)	301/507/110mm			
	Weight	9kg	10kg		
	Communication interface	RS485/CAN/Dry contact			
	Appearance	With LCD screen			
Operating Environment	Operating temperature	-20℃ ~+50℃			
	Storage temperature	-30℃ ~+70℃			
	Humidity	5%~95% Relative humidity (Non-condensing)			
	Protection level	IP20			

All In One Energy Storage Battery System



Product Description

One-stop home solution
High inverter compatibility
BMS battery mangement system
Support GPRS/WIFI/RS485, remote monitoring
Warranty 3 years, 10+ years life design

Product Features



ALL in one system



Stable performance



Battery energy management system



Recycling



Long service life



With communication protocol

Technical Specifications

Model		OLU-2000A		OLU-3000A	
Inverter Parameters					
Inverter Output	Rated power	2kW		3kW	
	AC rated voltage	230VAC			
	Rated frequency	50Hz			
	AC voltage	230VAC±5%			
	Max. power output	2kW		3kW	
	Max. Efficiency	92%			
	Switchover time	10ms			
	Wave	Pure sine wave			
Inverter Input	Battery overvoltage	31.0V			
	Battery undervoltage warning	23.8V			
	Battery undervoltage	22.8V			
	Constant charge voltage	28.8V			
	Float charge voltage	28.0V			
Grid Input	Rated voltage	220V			
	Voltage range	90~280VAC			
	Rated frequency	50Hz			
	Frequency range	40~70Hz			
	Rated current	10.9A			
	Max. AC current	17A			
PV Input	Max. voltage	85VDC			
Inverter Charge	Inverter Max. charge current	100A			
	Grid Max. battery charge current	50A			
	PV Max. charge current	50A			
Battery Parameters					
Rated capacity		2.56 kWh		3.5 kWh	
Nominal voltage		25.6V			
Discharge voltage range		21.6~28.8V			
Charge current		0.5C@25°C			
Max. charge current		1C@25°C			
Max. discharge current		1C@25°C			
Max. power output		2560Wh		3500Wh	
Depth of discharge DOD		0.9			
Communication interface		RS232			
Cycles		6000 cycles 80%DOD.@25°C			
Operating temperature range		Charge: 0°C ~50°C Discharge: -10°C ~60°C			
Storage temperature		-20°C ~ +60°C			

All In One Energy Storage Battery System



Product Description

One-stop home solution

Modular design and intelligent switching

Each battery is equipped with an independent BMS battery energy management system

Support GPRS/WIFI/RS485, remote monitoring

Warranty 3 years, 10+ years life design

Product Features



ALL in one system



Modular & Stacked Design



Battery energy management system



MPPT solar charging



Long service life



With communication protocol

Technical Specifications

Model	OLU-3500A-5	OLU-5000A-5	OLU-5500A-10	OLU-5500A-15
Inverter Parameters				
Rated power	3500W	5000W	5500W	5500W
AC rated voltage	230VAC			
Selectable voltage range	170~280VAC			
Frequency range	50 Hz/60 Hz			
AC voltage	230VAC±5%			
Max. power output	11000VA			
Efficiency	≥ 93.5%			
Switchover time	10ms			
Wave	Pure sine wave			
Rated battery voltage	51.2V			
Battery voltage range	40~60V			
Compatible battery type	Lithium			
Max. PV array open circuit voltage	500VDC			
Max. PV array power	3500W	5000W	5500W	5500W
MPPT voltage range	120~450VDC			
Max. charge current	80A	100A		
Net weight	10kg			
Dimension	550*200*324mm			
Battery parameters				
Rated capacity	5.12 kWh	5.12 kWh	10.24kWh	15.36kWh
Nominal voltage	51.2V			
Discharge voltage range	43.2~57.6V			
Charge current	0.5C@25°C			
Max. charge current	1C@25°C			
Max. discharge current	1C@25°C			
Max. power output	5120Wh	5120Wh	10240Wh	15360Wh
Depth of discharge DOD	0.9			
Communication interface	RS485/RS232/CAN			
Cycles	6000 cycles 80%DOD.@25°C			
Operating temperature range	Charge: 0°C ~50°C Discharge: -10°C ~ +60°C			
Storage temperature	-20°C ~ +60°C			
Net weight	55kg	55kg	100kg	145kg
Dimension	550*200*697mm	550*200*697mm	550*200*1070mm	550*200*1443mm

All In One Energy Storage Battery System



Product Description

One-stop home solution

Modular design and intelligent switching

Each battery is equipped with an independent BMS battery energy management system

Support GPRS/WIFI/RS485, remote monitoring

Warranty 3 years, 10+ years life design

Product Features



ALL in one system



Modular & Stacked Design



Battery energy management system



MPPT solar charging



Long service life



With communication protocol

Technical Specifications

Model	OLU-10000A-10	OLU-10000A-20
Inverter Parameters		
Rated power	10kW	
AC rated voltage	230VAC	
Selectable voltage range	90~280VAC	
Frequency range	50Hz/60Hz	
AC voltage	230VAC±5%	
Max. power output	11000VA	
Efficiency	93.5%	
Switchover time	10ms	
Wave	Pure sine wave	
Rated battery voltage	51.2V	
Battery voltage range	40~60V	
Compatible battery type	Lithium	
Max. PV array open circuit voltage	500VDC	
Max. PV array power	11kW	
MPPT voltage range	90~450VDC	
Max. charge current	150A	
Net weight	21kg	
Dimension	536*422*152mm	
Battery Parameters		
Rated capacity	10 kWh	20 kWh
Nominal voltage	51.2V	
Discharge voltage range	43.2~57.6V	
Charge current	0.5C@25°C	
Max. charge current	1C@25°C	
Max. discharge current	1C@25°C	
Max. power output	10240Wh	20480Wh
Depth of discharge DOD	0.9	
Communication interface	RS485/R5232/CAN	
Cycles	6000 cycles 80% DOD. @25°C	
Operating temperature range	Charge: 0°C ~50°C Discharge: -10°C ~60°C	

ESS Series Off Grid Energy Storage System



Product Description

The ESS series off-grid energy storage system combines multiple functions such as inverter, MPPT solar controller, and mains charging, which is committed to providing stable power for electrical equipment in areas experiencing power outages and shortages and unstable power supply.

The ESS series off-grid energy storage system is designed to output pure sine wave and convert DC power into AC power based on a fully digital intelligent solution with advanced SPWM technology. They are suitable for AC loads such as household appliances, power tools, industrial equipment, and audio & visual equipment.

Comprehensive electronic protection functions ensure that the power system is safer and more stable.

Product Features



Pure sine wave



Priority of municipal and photovoltaic power supply can be set



Wide PV input voltage



LCD display



Integrated MPPT controller



Electronic protection function

Technical Specifications

Model	ESS3048VM-100	ESS5048VM-100
Inverter Parameters		
Rated power	3kW	5kW
Battery voltage	48VDC	48VDC
Max. input power	3.5kW	5kW
DC Battery Side Parameters		
Nominal voltage	51.2V	51.2V
Nominal capacity	100Ah	100Ah
Nominal energy	5kWh	5kWh
PV Side Parameters		
PV input voltage	Max: 500V (MPPT voltage range: 120~450VDC)	
PV charge power	Max: 3kW	Max: 5kW
PV charge current	Max: 20A	Max: 50A
AC Side Input Parameters		
AC input voltage	230VAC/50Hz/60Hz	
AC charge current	Max: 20A	Max: 50A
AC Side Output Parameters		
AC rated output power	3KW	5KW
AC peak power	3.5kW	7kW
AC output voltage	Single phase 220VAC/230VAC/240VAC can be set, $\pm 5\%$ @50Hz/60Hz	
Efficiency (Peak)	90%	
Wave	Pure sine wave	
Operating temperature range	Charge 0°C ~+50°C Discharge -10°C ~+50°C	
Operating mode	Optional: mains priority/photovoltaic priority/battery priority	
Switchover time	10ms (PC) /20ms (Home appliance)	
Intelligent display	LED+LCD	
Dimension	500*300*785.3mm	

Wall Mounted Energy Storage Battery



Product Description

Digital monitoring system APP
High inverter compatibility
Reliable LFP cells
CANbus standard connection
Natural cooling system
IP20

Product Features



Overcharge protection



Overvoltage protection



Overcurrent protection



Recycling



Low Self-Discharge



Stable performance

Technical Specifications

Model	OL-51.2V 100AH	OL-51.2V 200AH
General Parameters		
Nominal voltage	51.2V	
Battery voltage range	43.2~57.6V	
Nominal capacity	100Ah	200Ah
Rated energy	5.12kWh	10.24kWh
Standard charge/discharge current	0.5C	0.5C
Max. charge/discharge current	1C	1C
Communication interface	CAN/RS485	
Expandable capability	15P	
Self-discharge	≤ 3% / month	
Protection	Overvoltage & Undervoltage/Overcurrent/Short-circuit/Over temperature & Under temperature protection etc.	
System Parameters		
IP rating	IP20	
Cooling	Natural	
Cycles	≥ 6000 cycles 80%DOD.@25°C	
Environment		
Operating temperature range	Charge 0°C ~ +60°C Discharge -20°C ~ +60°C	
Altitude	0~4000m (Derating over 2000m)	

Wall Mounted Energy Storage Battery



Product Description

Digital monitoring system APP
High inverter compatibility
Reliable LFP cells
CANbus standard connection
Natural cooling system
IP65

Product Features



Overcharge protection



Overvoltage protection



Overcurrent protection



Recycling



Low Self-Discharge



Stable performance

Technical Specifications

Model	OL-51.2V 100AH-H	OL-51.2V 200AH-H
General Parameters		
Nominal voltage	51.2V	
Battery voltage range	43.2~57.6V	
Nominal capacity	100Ah	200Ah
Rated energy	5.12kWh	10.24kWh
Standard charge/discharge current	0.5C	0.5C
Max. charge/discharge current	1C	1C
Communication interface	CAN/RS485	
Expandable capability	15P	
Self-discharge	≤ 3% / month	
Protection	Overvoltage & Undervoltage/Overcurrent/Short-circuit/Over temperature & Under temperature protection etc.	
System Parameters		
IP rating	IP65	
Cooling	Natural	
Cycles	≥ 6000 cycles 80%DOD.@25°C	
Environment		
Operating temperature range	Charge 0°C ~ +60°C Discharge -20°C ~+ 60°C	
Altitude	0~4000m (Derating over 2000m)	

Energy Storage Lithium Battery Pack



Product Description

Intelligent BMS multiple protection
Excellent performance standards ≥ 6000 cycles life span
Standard modular design, easy maintenance
Battery support parallel connection with capacity up to 80kWh
Support APP remote monitoring, cloud platform intelligent management

Product Features



Modular design



Operational safety



Battery management system



Flexible and easy-installation



Long service life



Parallel support for more energy

Technical Specifications

Model	OL4850-A1	OL48100-A1	OL48150-A1	OL48200-A1
General Parameters				
Nominal voltage	51.2V			
Battery voltage range	43.2~57.6V			
Nominal capacity	50Ah	100Ah	150Ah	200Ah
Rated energy	2.56kWh	5.12kWh	7.68kWh	10.24kWh
Standard charge/discharge current	0.5C	0.5C	0.5C	0.5C
Max. charge/discharge current	1C	1C	1C	1C
Communication interface	CAN/RS485			
Expandable capability	15P			
Self-discharge	≤ 3% / month			
Protection	Overvoltage & Undervoltage/Overcurrent/Short-circuit/Over temperature & Under temperature protection etc.			
System Parameters				
IP rating	IP20			
Cooling	Natural			
Cycles	≥ 6000 cycles 80%DOD.@25°C			
Environment				
Operating temperature range	Charge 0°C ~ +60°C Discharge -20°C ~ +60°C			
Altitude	0~4000m (Derating over 2000m)			

Stackable Lituium Battery Energy Storage System



Product Description

Intelligent BMS multiple protection
Excellent performance standards ≥ 6000 cycles life span
Standard modular design, easy maintenance
Battery support parallel connection with capacity up to 80kWh
Support APP remote monitoring, cloud platform intelligent management

Product Features



Modular design



Operational safety



Battery management system



Flexible and easy-installation



Long service life



Parallel support for more energy

Technical Specifications

Model		OL48400-A1
General Parameters		
Nominal voltage		51.2V
Battery voltage range		43.2-57.6V
Nominal capacity		400Ah
Rated energy		20.48kWh
Standard charge/discharge current		1C
Max. charge/discharge current		1C
Communication interface		CAN/RS485
Expandable capability		15P
Self-discharge		≤ 3% / month
Protection		Overvoltage & Undervoltage/Overcurrent/Short-circuit/Over temperature & Under temperature protection etc.
System Parameters		
IP rating		IP20
Cooling		Natural
Cycles		≥ 6000 cycles 80%DOD.@25°C
Environment		
Operating temperature range		Charge: 0~ +60° C Discharge: -10~ +60°C
Altitude		0~ 4000m (Derating over 2000m)

Smart Energy Power System



Product Description

Digital monitoring system APP
High inverter compatibility
Reliable LFP cells
CANbus standard connection
Natural cooling system

Product Features



Overcharge protection



Overvoltage protection



Overcurrent protection



Recycling



Low Self-Discharge



Stable performance

Technical Specifications

Model		OLU-Power-L1-5	OLU-Power-L1-10	OLU-Power-L1-15	OLU-Power-L1-20
Total energy*		5.04kWh	10.08kWh	15.12kWh	20.16kWh
Usable energy (DC)*		4.6kWh	9.2kWh	13.8kWh	18.4kWh
Nominal charge/discharge power		2.5kW	5.0kW	7.5kW	10kW
Peak power (Only discharge)		7kW for 3s	10kW for 3s	15kW	20kW
Constant current (Only discharge)		100A	120A	150A	200A
Voltage		43.2~52.5VDC			
Nominal voltage		48VDC			
Nominal current		50A	90A	135A	180A
Max. charge voltage		54VDC			
Weight		45kg	90kg	135kg	180kg
Dimension		510*510*238mm	510*510*476mm	510*510*714mm	510*510*952mm
Max.recommended DOD		90%			
Operating condition		Indoor or outdoor			
Operating temperature	Charge	From 0~60°C			
	Discharge	From -10~60°C			
Humidity		4~100% (Non-condensing)			
Pollution degree		3			
Overvoltage category		II			
Cooling type		Natural cooling			
Case material		Metal + Plastic			
Color		Black + silver grey or white			
Installation		Free-standing			
IP rating		IP 20			
Protective class		I			
Parallel capability		Max. 4 sets			
Life span		> 15 years			
Communication interface		CAN/ RS485			
Protection mode		Triple hardware protection			
Battery protection		Overcurrent/Overvoltage/Short-circuit/ Undervoltage/Over temperature			
Cycles		6000 cycles 80%DOD.@25°C			
Hazardous material classification		9			
Transportation		UN 38.3			

Global Sales Distribution

We have established an efficient sales network around the world. No matter where you are, we can deliver high-quality products and services.

